



**MakeYourOwnMolds.com**, a division of Culinart, Inc.  
 7609 Production Dr., Cincinnati, OH 45237  
 Toll Free: 1.800.333.5678 Fax: 513.244.2555  
 questions@makeyourownmolds.com

# Silicone Plastique®

**Silicone Plastique®** is not a liquid. Instead, it has the consistency of cookie dough. It can be applied by hand to almost any surface or rolled out between sheets of plastic. Cure time is about an hour to yield a pliable, yet durable, rubber mold suitable for direct food contact. **Silicone Plastique®** resists temperatures below freezing and up to 400°F.

Because you apply only the amount you need, you save on quantity of silicone used compared to liquid silicones - Very Cost Effective! Absolutely perfect for chocolate, butter, tallow, cheese, poured sugar, gelatine, pastillage & ice molding. Also perfect for wax, clay, plaster and soap molds!

## Simple and Easy to Use!



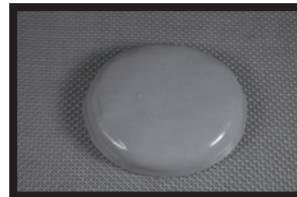
**Step 1**  
 Equal amounts of Part A (blue) and Part B (white) may be measured by weight or volume.



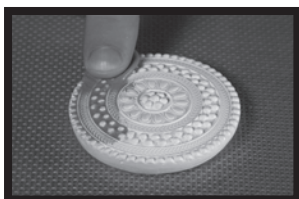
**Step 4**  
 Apply a second layer, at least one-quarter inch thick, completely covering the object's surface. (Note: To bond correctly, layers of Plastique must be applied before the previous layer has fully cured.)



**Step 2**  
 Parts A & B are combined and kneaded until a uniform color is achieved. Your Plastique is now ready to use and should remain workable for 10 -15 minutes.



**Step 5**  
 Silicone Plastique® has a work time of about 10-15 minutes and cure time of about an hour at room temperature.



**Step 3.**  
 Rub a small amount of Plastique into the details of your object, creating an initial layer, called a skim coat.



**Step 6**  
 Allow the Plastique to fully cure before removing your original object.

Order online at  
**www.makeyourownmolds.com**  
 or by  
 Phone 513-244-2999  
 Toll-Free 800-333-5678  
 Fax 513-244-2555

### Quantity

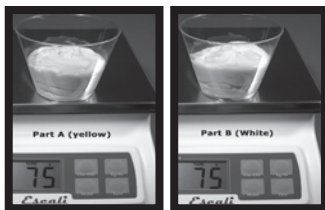
### Price per lb.

1-4 lbs.	<b>\$25 per lb.</b>
5-9 lbs.	<b>\$24 per lb.</b> (save \$1 per lb.)
10-19 lbs.	<b>\$23 per lb.</b> (save \$2 per lb.)
20-29 lbs.	<b>\$22 per lb.</b> (save \$3 per lb.)
30-39 lbs.	<b>\$21 per lb.</b> (save \$4 per lb.)
40-49 lbs.	<b>\$20 per lb.</b> (save \$5 per lb.)
50 lbs. (and up)	<b>\$19 per lb.</b> (save \$6 per lb.)

# Silicone Spread™

No matter how you apply it, Silicone Spread™ goes on easily and makes a strong, stretch mold!

**Silicone Spread™** has the consistency of buttercream and can be applied over an object using a brush, spatula or pastry bag. **Silicone Spread™** is an easy to use paste that can be applied on horizontal or vertical surfaces. **Silicone Spread™** creates a rubber mold with a soft feel and excellent stretch. **Silicone Spread™** is food-grade and resists temperatures below freezing and up to 400 degrees F.



## Step 1

Equal amounts of Part A (yellow) and Part B (white) may be measured by weight or volume. Simple and Easy!



## Step 4

Additional, thicker layers of Spread should be applied to achieve an overall thickness of at least 1/4 of an inch.



## Step 2

Parts A & B are stirred thoroughly until uniform color is achieved. Your Spread is now ready to use and should remain workable for up to 20 minutes. *(Note: You may refrigerate Silicone Spread before combining to extend work time.)*



## Step 5

**Silicone Spread™** has a work time of about 20 minutes and a cure time of around two hours at room temperature.



## Step 3

Apply a skim coat of Spread with a flat, firm bristled paint brush. Work the material into your object's detail, coating the entire surface.



## Step 6

Allow the Spread to fully cure before removing your original object.

Order online at  
[www.makeyourownmolds.com](http://www.makeyourownmolds.com)  
or by  
Phone 513-244-2999  
Toll-Free 800-333-5678  
Fax 513-244-2555

## Quantity

## Price per lb.

1-4 lbs.	\$25 per lb.
5-9 lbs.	\$24 per lb. (save \$1 per lb.)
10-19 lbs.	\$23 per lb. (save \$2 per lb.)
20-29 lbs.	\$22 per lb. (save \$3 per lb.)
30-39 lbs.	\$21 per lb. (save \$4 per lb.)
40-49 lbs.	\$20 per lb. (save \$5 per lb.)
50 lbs. (and up)	\$19 per lb. (save \$6 per lb.)

# CopyFlex Liquid Silicone™

**CopyFlex™** is an easy to use silicone liquid -- equal amounts of part A and part B are combined to produce a durable, flexible, food-grade rubber mold that resists temperatures below freezing and up to 400 degrees F. **CopyFlex™** is a liquid and must be contained in a box or form while curing. Here we use a clear acrylic box providing a 1/4 inch of clearance on all sides of the item we are duplicating, which we call the original.



## Part One: Anchoring Your Original Object

Apply Anchor-Dit™ to the back side of the original and press it down into the center of the mold box. Anchor-Dit™ should smooch out along the sides, insuring that a strong yet temporary bond has been established and that no silicone will creep underneath. With the excess Anchor-Dit™ removed, the mold box is ready to receive the **CopyFlex™** liquid.

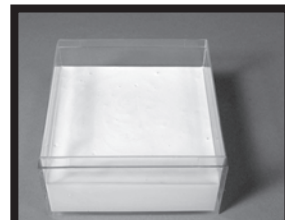
## Part Two: Portions & Mixing

Mix a small amount of **CopyFlex™**, just enough to paint a thin coat over the object insuring that air bubbles are not trapped on the surface. Scale out equal parts of A and B by weight or volume, combine the two parts in a container and mix thoroughly until the color is uniform. Make sure unmixed material does not remain on the sides or bottom.



## Part Three: Initial Application-- "skim coat"

Using a natural bristle artist brush, paint a thin coat of **CopyFlex™** onto the original. The idea here is not to cover the object but embed the mold making material into the details. We call this a "skim coat" and it ensures that no air bubbles will be trapped in the nooks and crannies of the surface.



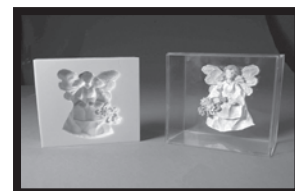
## Part Four: Finishing Applications Stretch Pour

Once the skim coat is applied, a larger batch of **CopyFlex™** is prepared and poured to fill the mold box at least 1/4" above the highest point on the original. **CopyFlex™** should be poured in one spot from a height of about 12" which allows the material to stretch as it falls. We call this a "stretch pour" and it helps eliminate air that was incorporated into the liquid silicone during mixing. Pour **CopyFlex™** in one spot only, usually in a corner and not directly on the original. Allow CopyFlex to slowly creep over the original until it is covered completely.



## Part Five: Mold Completion

**CopyFlex™** cures in about four hours. A quick way to check if **CopyFlex™** is completely cured is press a coin's edge into the surface to see if it leaves an imprint. Cured **CopyFlex™** will spring right back leaving no imprint whatsoever.



Order online at  
[www.makeyourownmolds.com](http://www.makeyourownmolds.com)

or by

Phone 513-244-2999  
Toll-Free 800-333-5678  
Fax 513-244-2555

## Quantity

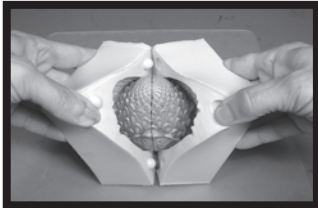
## Price per lb.

1-4 lbs.	\$25 per lb.
5-9 lbs.	\$24 per lb. (save \$1 per lb.)
10-19 lbs.	\$23 per lb. (save \$2 per lb.)
20-29 lbs.	\$22 per lb. (save \$3 per lb.)
30-39 lbs.	\$21 per lb. (save \$4 per lb.)
40-49 lbs.	\$20 per lb. (save \$5 per lb.)
50 lbs. (and up)	\$19 per lb. (save \$6 per lb.)

# The Dits™



**Anchor-Dit™** creates a strong suction between an object and work surface. Apply an even coat onto the bottom of the item to be mounted. Press item onto a non-porous work surface. **Anchor-Dit™** should spread out slightly around the perimeter. The excess material should be removed with a brush, spatula or towel before applying mold-making material. To remove object from work surface, pry with a thin tool that can be worked between item and work surface.



**Release-Dit™** is applied very thinly over a model to create a shiny surface and ensure easy release of the mold from the original object. **Release-Dit™** forms a non-stick barrier between two silicone surface preventing one from bonding to the other. This is particularly valuable when making multiple piece molds. Apply **Release-Dit™** with a brush and remove excess material with repeated strokes from a cleaned brush or by wiping with a soft cloth.



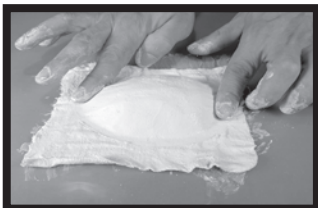
**Seal-Dit™** will seal wood, plaster, paper, cloth and almost any porous surface, making these items suitable for the application of mold materials. Apply **Seal-Dit™** with a brush, working the material into the surface of the item to be sealed. Remove excess material with repeated strokes from a cleaned brush or by wiping with a soft cloth.

**Dit Prices:**

**2 oz jar \$4.00**

**8 oz. jar \$9.00**

## EZ-Shell Maker™ & Safe-D-Clay™

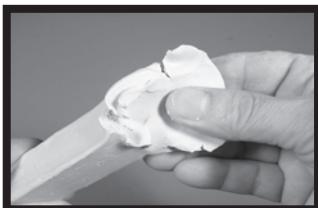


**EZ-Shell Maker™** Unroll enough material to cover the mold at least four layers thick. Submerge quickly in water. Do not submerge longer than a second. Squeeze excess water out of cloth immediately. Apply **EZ-Shell Maker™** over the mold, folding sides to conform to the shape of the mold. Shell should be hard enough to handle in 30 minutes. Cure to full hardness by allowing to dry on a wire rack overnight. To create a stronger shell, use more layers of cloth material.

**EZ-Shell Maker™**

(each roll is 8" x 5 yds.)

**per roll \$8.00**



**Safe-D Clay™** is softened by kneading and then applied to the back of thin objects, such as lace, to thicken them before making a mold. **Safe-D Clay™** can also be carved or modeled to create an original sculpture. When making two-piece molds, use **Safe-D Clay™** to cover half of the original object, thereby establishing the parting line. Please note that **Safe-D Clay™** is NOT used to make molds by itself.

**Safe-D Clay™**

**Quantity**

**Price per lb.**

1-4 lbs.

**\$4.00 per lb.**

5-9 lbs.

**\$3.50 per lb.**

10-29 lbs.

**\$3.00 per lb.**

30-49 lbs.

**\$2.50 per lb.**

50 lbs. (and up)

**\$2.00 per lb.**

# Important! Mold Making Guidelines:

---

- Wash and dry your hands before working with Silicone Plastique®. In addition to good hygiene, washing hydrates dry skin and prevents Silicone Plastique® from sticking to your hands.
- When making molds for food, all mold making materials and objects to be duplicated should be non-toxic and/or food grade. Do not use a food mold to make non-food items. You can always make another mold from materials such as plaster, casting resins and clay.
- Some materials inhibit the cure of Silicone Plastique®. Sulfur (found in many sculpting clays and in latex gloves), adhesives, caulk, and some types of vinyl are common examples that can cause problems. When in doubt, test for compatibility by applying a small amount of mold making material and allow to cure before making a mold of the entire piece.
- FDA guidelines state that all newly made molds should be washed after curing and before use. Cured molds can be washed in the dishwasher, or cleaned with soap and hot water. You can even sterilize them in boiling water.
- If you want more time to make a mold, refrigerate parts A and B separately before mixing. Cold Silicone Plastique® will cure at a slower rate allowing more time for its application onto a large or intricately detailed original.
- Silicone Plastique® can be used at temperatures as high as 400 degrees F. and can also be used to freeze foods into a particular shape.
- Once Silicone Plastique® is cured, it cannot be melted or reformed. A finished Silicone Plastique® mold is permanent.

Our silicone mold making materials are food grade and have been tested to assure compliance with FDA 21 CFR 177.2600. However, since we have no control over how our products are used, no warranty is expressed or implied concerning the results obtained from using our silicone moldmaking materials.

## **Safety**

*Parental supervision is recommended for children under 12. Keep out of reach of children. Silicone Plastique should not be eaten. In case of accidental ingestion, do not induce vomiting and call a physician immediately. If skin irritation occurs, remove Silicone Plastique from skin and wash with soap and water.*

# ClearCut™ Isomalt

**ClearCut™ Isomalt Crystals are a AAA grade isomalt sugar that is incredibly clear and resistant to humidity and crystallization.**

## How to Cook and Use:

1. Use distilled water - many parts of the country have hard water. The minerals in tap water can turn brown when exposed to elevated temperatures but because there is so little of these minerals you perceive it as a yellowing effect.



2. Add distilled water until the isomalt looks like wet sand.

3. Use stainless steel pots and stainless steel utensils for stirring. Do not use a wooden spoon. Foreign materials in the wood leach out into the isomalt, which can turn the mixture yellow.

4. Once isomalt comes to a boil, use a nylon pastry brush to wash down the sides of the pot. Do not use a natural bristle brush. There are a host of chemicals and conditioning agents in the natural bristles

that can turn your isomalt yellow.

5. Stop stirring isomalt water mixture when it comes to a boil.

6. Test your candy thermometer, many of them read inaccurately. Test by bringing water to a boil and inserting thermometer and observe the temperature it shows. It should read 212 degrees F at sea level.

7. Cook isomalt to 338 degrees F. Take off heat at about 334 degrees F and place bottom of pot in water to stop the cooking process. Allow the pot to stay in water only until the hissing stops. About 5 seconds.

8. To color isomalt, use paste or powdered food colors. Liquid food colors introduce too much moisture in the isomalt, which will make it sticky.

9. Place isomalt in a 265 degree F oven and allow to cool for 15 minutes. Your isomalt will have no bubbles and remain crystal clear for continued pouring.

Order online at  
[www.makeyourownmolds.com](http://www.makeyourownmolds.com)

or by

Phone 513-244-2999

Toll-Free 800-333-5678

Fax 513-244-2555

### Quantity

### Price per lb.

1-4 lbs.

\$5.00 per lb.

5-9 lbs.

\$4.50 per lb.

10-19 lbs.

\$4.00 per lb.

20-29 lbs.

\$3.50 per lb.

30-49 lbs.

\$3.00 per lb.

50 lbs. (and up)

\$2.75 per lb.

# New Products!

## Chef's Silica Gel Packets - Food Grade



A powerful desiccant that absorbs moisture from the air creating a perfectly dry environment for the storage of sugar and Isomalt pieces. Packets can be safely placed in any airtight container in order to protect moisture sensitive sugar work for months at a time. Chef's Silica Gel Packets meet all FDA requirements for dry food packaging and storage.

Pack Size	Number of Packs				
<b>5 g Packs</b> (each pack dehumidifies a container up to 6" x 6" x 6")	<b>1-9 individual</b> <b>\$ .75 ea.</b>	<b>10 lot</b> <b>\$6.75</b>	<b>25 lot</b> <b>\$15.00</b>	<b>50 lot</b> <b>\$26.25</b>	<b>100 lot</b> <b>\$45.00</b>
<b>28 g Packs</b> (each pack dehumidifies a container up to 11" x 11" x 11")	<b>1-9 individual</b> <b>\$3.00 ea.</b>	<b>10 lot</b> <b>\$27.00</b>	<b>25 lot</b> <b>\$60.00</b>	<b>50 lot</b> <b>\$105.00</b>	<b>100 lot</b> <b>\$180.00</b>
<b>112 g Packs</b> (each pack dehumidifies a container up to 17" x 17" x 17")	<b>1-9 individual</b> <b>\$5.00 ea.</b>	<b>10 lot</b> <b>\$45.00</b>	<b>25 lot</b> <b>\$100.00</b>	<b>50 lot</b> <b>\$175.00</b>	<b>100 lot</b> <b>\$300.00</b>
<b>224 g Packs</b> (each pack dehumidifies a container up to 22" x 22" x 22")	<b>1-9 individual</b> <b>\$8.00 ea.</b>	<b>10 lot</b> <b>\$72.00</b>	<b>25 lot</b> <b>\$160.00</b>	<b>50 lot</b> <b>\$280.00</b>	

## Induction Range



Quite simply the best way to cook isomalt. This affordable yet powerful induction range quickly cooks isomalt evenly without overheating the sides of your pot. Safe, efficient delivery of heat directly into the bottom surface of your cooking pot.

Approx. 12" W x 2.5" H x 15" D

**Induction Range \$139.00**

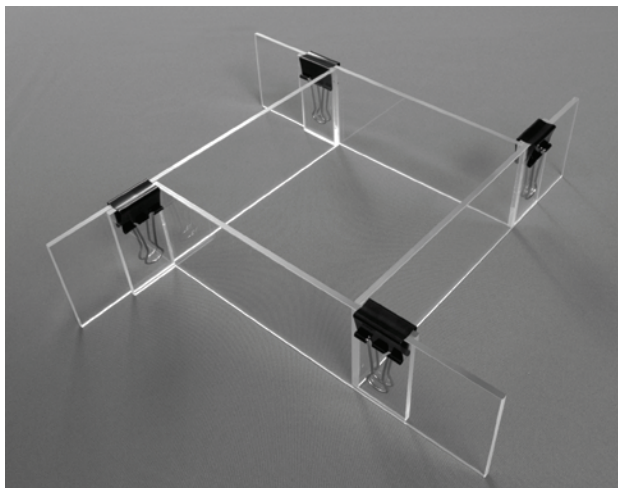
# New Products!

## Silicone Clean-Up Cloths



Our Silicone Clean-up Cloths are heavy-duty towelettes premoistened with a special cleaning solution that cuts through uncured silicone for fast and easy cleanup. Silicone Clean-Up Cloths will not harm skin and can be used to remove silicone from hands, counter top spills, tools and brushes.

Product	Number of Packs				
Silicone Clean-up Cloth Packs	1-9 individual \$.99 ea.	10 lot \$8.91	25 lot \$19.80	50 lot \$34.65	100 lot \$59.40



## Adjust-A-Mold Box™

This reuseable mold box can be configured into many different sizes to fit almost any mold making project!

Set consists of four tough acrylic "L" shaped side walls that make any square or rectangular shape up to 10" x 10".

Includes four spring clips.

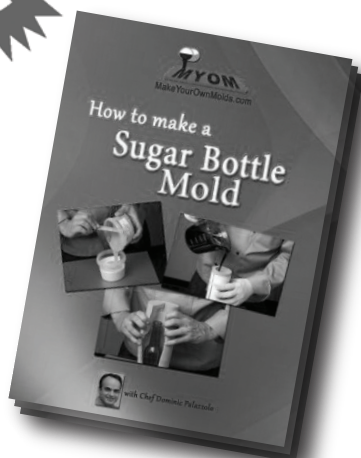
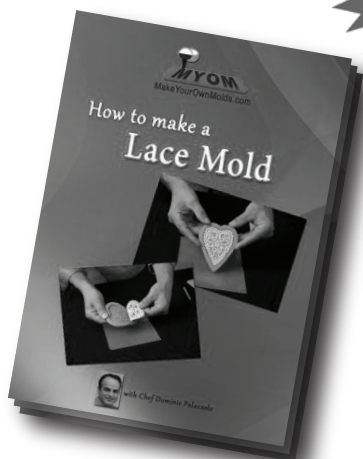
Approx. 10.5" W x 3" H x 1.5" D

\*The use of Safe-D-Clay is recommended to seal around bottom edge of the Adjust-A-Mold Box!

Adjust-A-Mold Box \$39.00



## Instructional DVD's



By popular request, our instructional videos are now available on DVD format! Watch "How to make a Lace Mold" or "How to make a Sugar Bottle Mold" - at your own pace for detailed step-by-step instruction.

"How to make a Lace Mold" - DVD \$19.99

"How to make a Sugar Bottle Mold" - DVD \$19.99